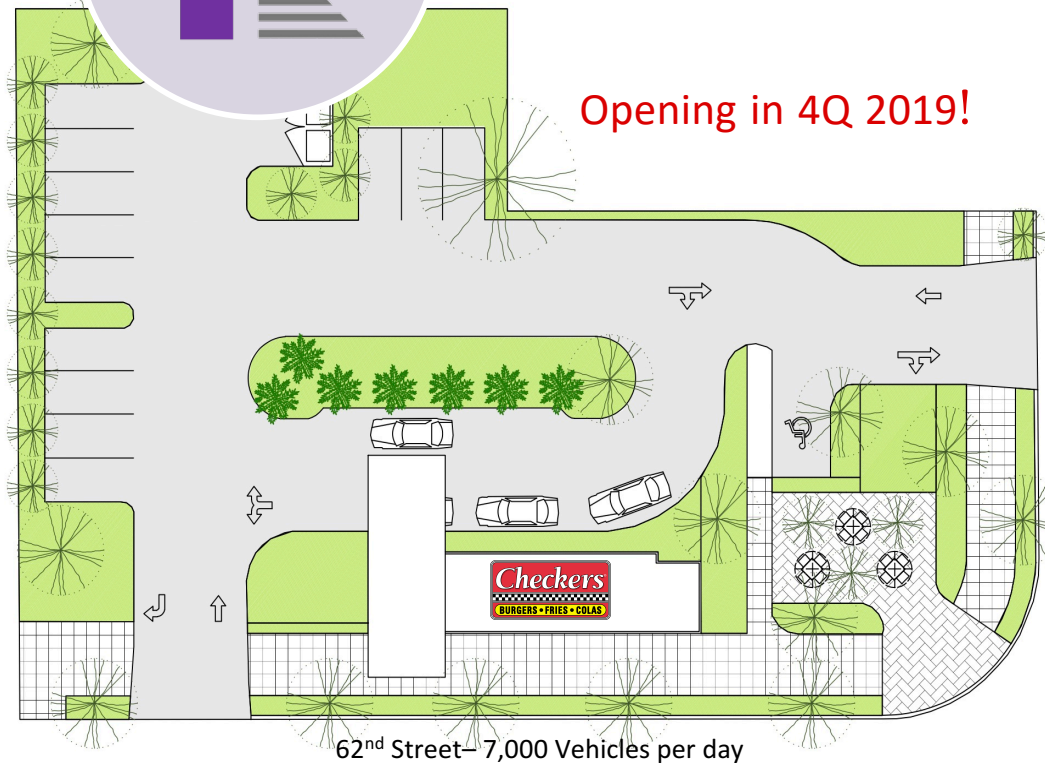


CHECKERS AT 62nd STREET

227 NW 62ND STREET MIAMI, FL 33150



Opening in 4Q 2019!



SITE INFORMATION

MSA: Miami-Fort Lauderdale-West Palm Beach (FL)

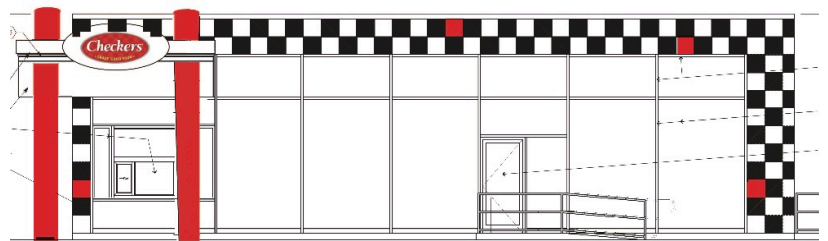
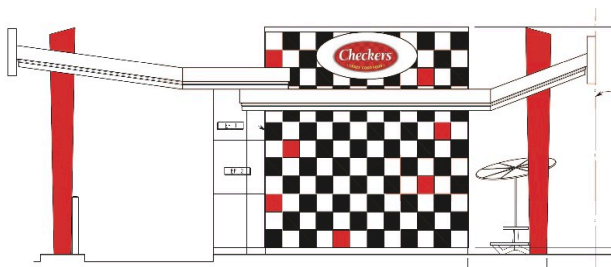
Lot Area: 0.53 Acres

GLA: 910 Square Feet

Parking: 13 Parking spots

Latitude: 25°: 49'57: 97"

Longitude: -80°: 12'03: 45"

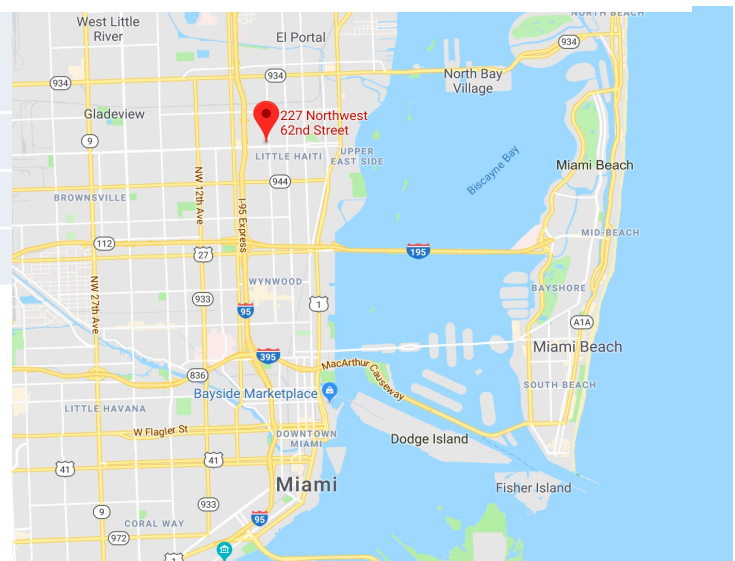


2018 Estimates	Total Population	Total Households	Median HH Income	Per Capita Income
1 Mile	31,388	11,210	\$22,285	\$12,574
3 Mile	204,763	75,838	\$30,655	\$19,158
5 Mile	581,220	223,546	\$34,827	\$22,281

Easy access to I-95 and N Miami Ave

Dense Residential Area

New Development



Exclusively Leased and Managed by

REDEVCO MANAGEMENT

(305) 981-0888

leasing@redevco.org

www.redevco.org

LinkedIn: redevco management