

Retail Space for Lease

Promenade Plaza
 11203 – 11281 S.W. 152nd Street
 Miami, Florida 33157

GLA: 69,054 sq. ft.

Location: N/W/C of S.W. 152nd Street & S.W. 112th Ave.

Tenants: Family Dollar, Citibank, Humana, CVS Pharmacy, Quest, Subway, McDonald's, Popeye's

Available: 1,300 Sq. Ft.
 25,600 +/- Sq. Ft.
 (Anchor Space / Divisible)

	1 Mi.	3Mi.	5Mi
Population:	16,639	126,993	375,048
Avg, HH Inc:	\$57,844	\$73,384	\$74,730
Med. HH Inc:	\$47,941	\$55,724	\$56,249

Highlights: Located less than ½ a mile East from the FL Turnpike in a densely populated Residential area. Also within close proximity to local hospitals such as Jackson South, Kendall Regional, & Baptist

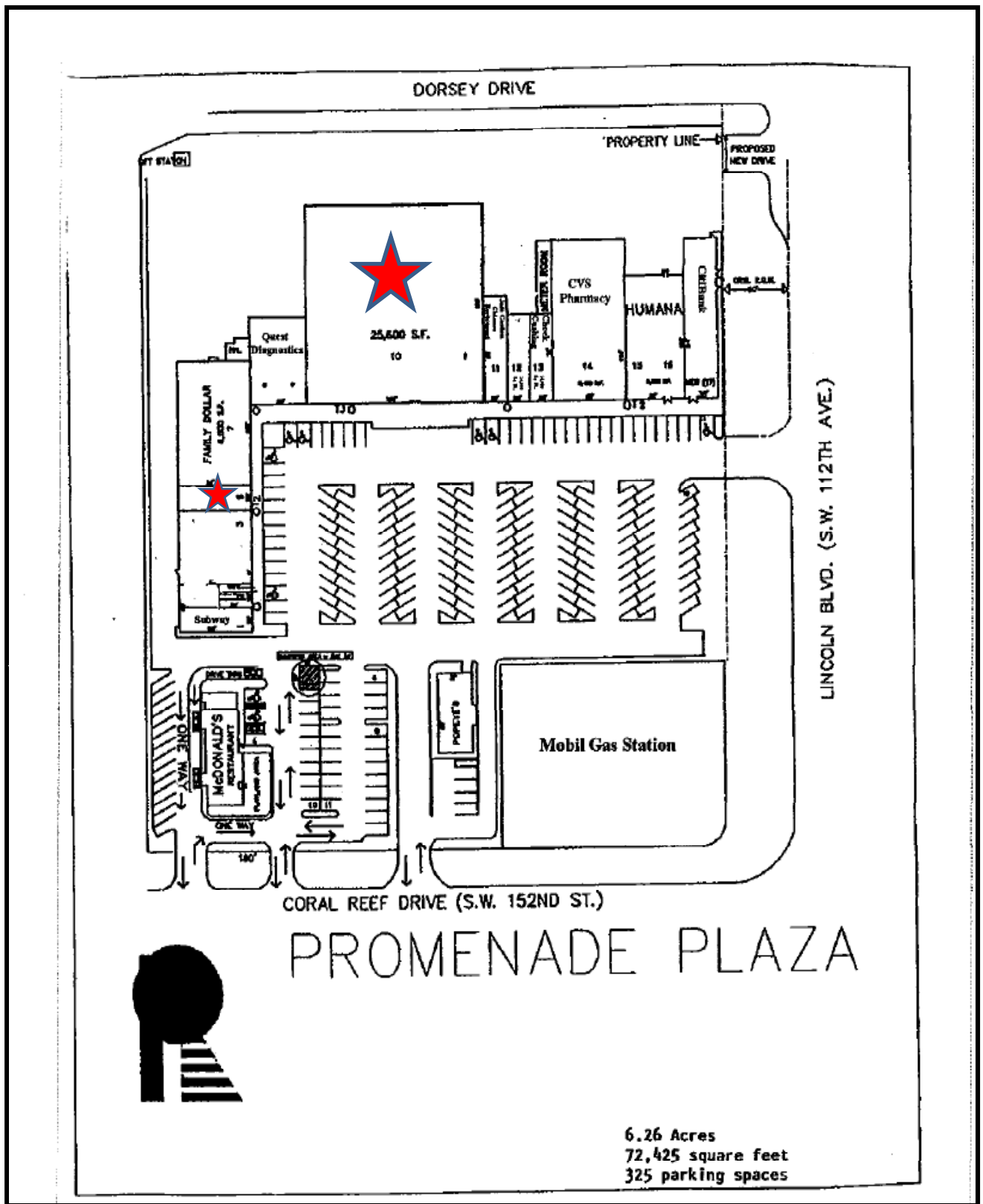
For more information please visit our website www.redevco.org



Another Redevco Development
 Exclusively Leased by REDEVCO MANAGEMENT
 11098 Biscayne Blvd., Suite 103, Miami, Florida 33161
 Phone: (305) 981-0888 Fax: (305) 891-0003



The information contained herein was obtained from sources we consider reliable. We cannot be responsible, however, for errors, omissions, prior sale, withdrawal from the market or change in price. Seller/Lessor and Broker make no representation as to the environmental condition of the property and recommend Purchaser's or Lessee's independent investigation.



PROMENADE PLAZA



6.26 Acres
72,425 square feet
325 parking spaces